

IWW - JACKSONVILLE TO MIAMI CUTS DA-1 THRU DA-14 DADE COUNTY, FLORIDA HYDROGRAPHIC EXAM SURVEY FY22 10-FOOT PROJECT

SURVEY NOTES

- REFER TO SURVEY NO. 22-075.
- SOUNDINGS ARE IN FEET AND TENTHS AND REFER TO NOAA'S REPORTED MEAN LOWER LOW WATER (MLLW) OF THE 1983-2001 TIDAL EPOCH.
- TIDAL REDUCTIONS WERE OBTAINED UTILIZING A REAL-TIME KINEMATIC (RTK) GPS AND REFERENCED TO MLLW UTILIZING A HYPACK KINEMATIC TIDE DATUM (KTD) MODEL. KTD FILE NAME IS: "BROWARD-MIAMIDADE-MONROE-COLLIER_2018 05 02.KTD".
- ALL ELEVATIONS ARE BELOW THE CHART DATUM UNLESS PRECEDED BY A (+) SIGN.
- PLANE COORDINATES ARE BASED ON THE TRANSVERSE MERCATOR PROJECTION FOR THE EAST ZONE OF FLORIDA AND REFERENCED TO NORTH AMERICAN DATUM OF 1983 (NAD83).
- ALL STATIONING REFERS TO THE CENTERLINE OF THE CHANNEL.
- THIS SURVEY WAS PERFORMED USING FLORIDA PERMANENT REFERENCE NETWORK (VRS FOR REAL-TIME KINEMATIC (RTK) GPS POSITIONING).
- DEPTHS DEPICTED BY THIS SURVEY ARE REFERENCED TO MLLW, TIDAL EPOCH 1983-2001 AS REPORTED BY THE NATIONAL OCEANIC AND ATMOSPHERIC ADMINISTRATION (NOAA). NOAA'S VDATUM MODEL WAS USED AND CALIBRATED TO THE PUBLISHED MLLW HEIGHT OF THE BENCHMARK SPECIFIED BELOW.
NOAA TIDAL STATION "MWDA-7 RM 1" FOR ALL CUTS (NGS PID: AC2387)
VERTICAL MEASUREMENTS WERE MADE USING A R2SONIC 2024 MULTI-BEAM SENSOR OPERATING AT 240 KHZ (HIGH FREQUENCY). ALL SOUNDINGS SHOWN ARE IN HIGH FREQUENCY.
- AIDS TO NAVIGATION WERE LOCATED DURING THIS SURVEY.
- THE INFORMATION DEPICTED ON THIS MAP REPRESENTS THE RESULTS OF SURVEYS MADE ON THE DATES INDICATED ABOVE AND CAN ONLY BE CONSIDERED AS INDICATING THE GENERAL CONDITIONS AT THAT TIME. THIS CHART IS SOLELY FOR THE DISTRIBUTION OF AVAILABLE DEPTHS AT THE TIME OF THE SURVEY.
- SURVEY ACCURACY PERFORMANCE STANDARDS, QUALITY CONTROL, AND QUALITY ASSURANCE REQUIREMENTS WERE FOLLOWED DURING THIS SURVEY IN ACCORDANCE WITH USACE EM 1110-2-1003, HYDROGRAPHIC SURVEYING, 30 NOV 2013.

| VESSEL | DATE OF SURVEY | CUT |
|--------|----------------|-----------------------|
| SB-52 | 09 MAR 2022 | CUTS DA-6 THRU DA-11 |
| SB-52 | 10 MAR 2022 | CUTS DA-12 THRU DA-14 |
| SB-52 | 16 MAR 2022 | CUTS DA-3 THRU DA-7 |
| SB-52 | 17 MAR 2022 | CUTS DA-1 THRU DA-2 |

| LEGEND | |
|--------|--------------------|
| | MONUMENT |
| | LIGHTED BEACON |
| | GREEN DAYBEACON |
| | RED DAYBEACON |
| | RED LIGHTED BUOY |
| | GREEN LIGHTED BUOY |
| | CAN BUOY |
| | NUN BUOY |
| | TIDE STAFF |
| 8 | PROJECT DEPTH |

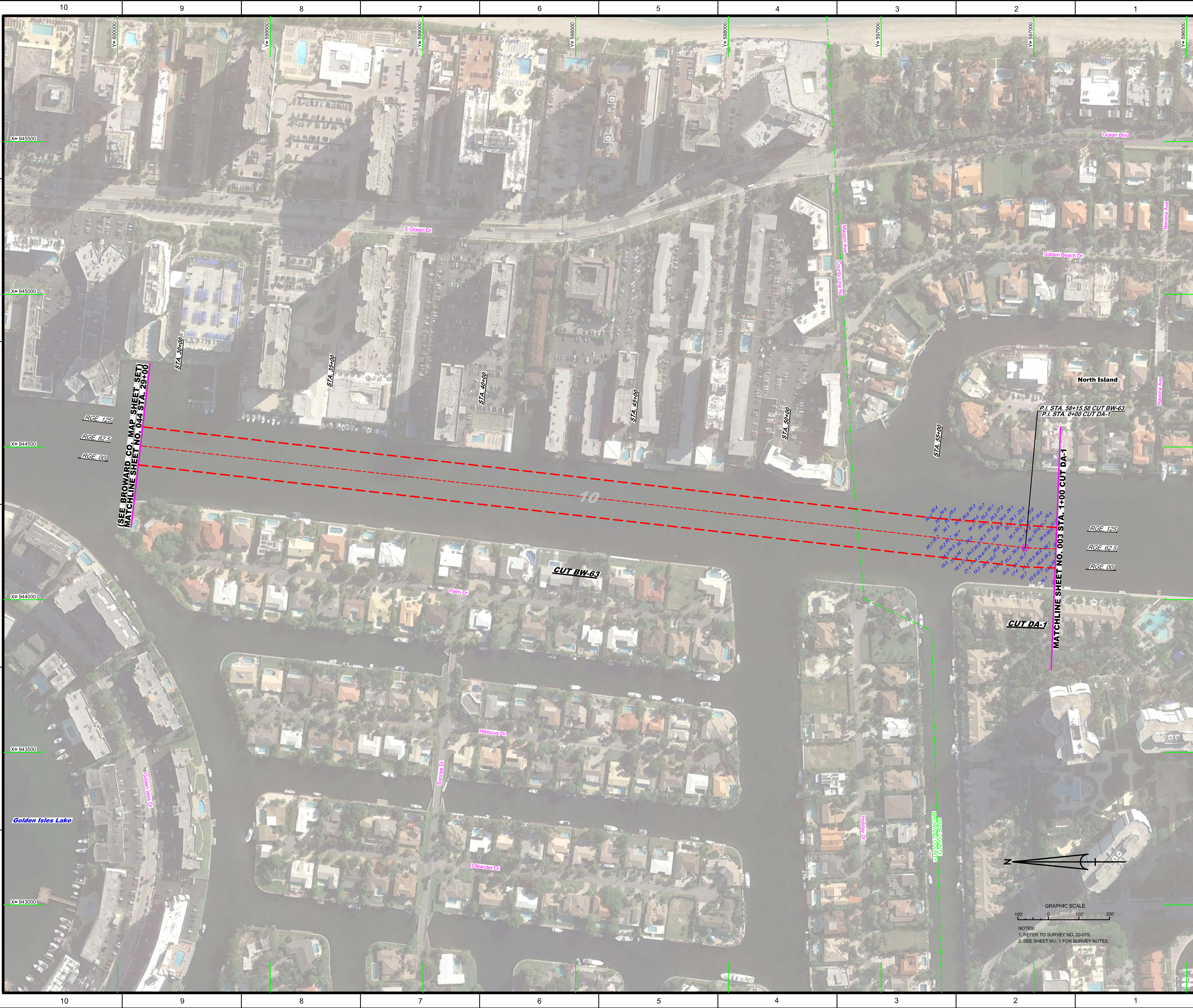
US Army Corps of Engineers
Jacksonville District
SAFETY ON THIS JOB
DEPENDS ON YOU

DEPARTMENT OF THE ARMY
JACKSONVILLE DISTRICT, CORPS OF ENGINEERS
JACKSONVILLE, FLORIDA

INTRACOASTAL WATERWAY
JACKSONVILLE TO MIAMI, FLORIDA
DADE COUNTY
**HYDROGRAPHIC EXAM SURVEY FY22
10-FOOT PROJECT**
INDEX, LOCATION AND VICINITY
MAP

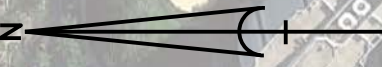
Scale: AS SHOWN
Drawing no.
1

SHEET 01 OF 45



(SEE BROWARD CO MAP SHEET SET
MATCHLINE SHEET NO. 044 STA. 29+00)

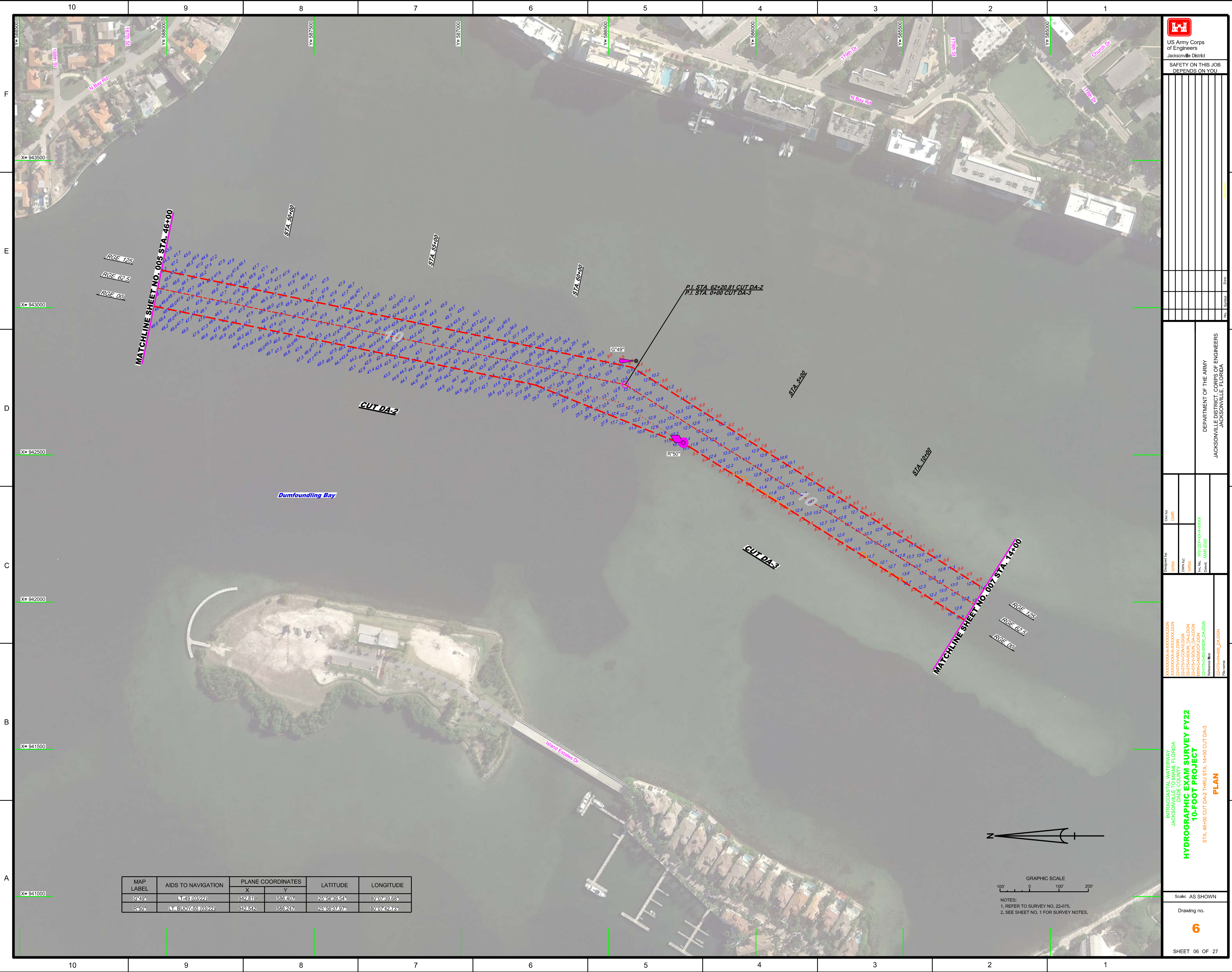
MATCHLINE SHEET NO. 003 STA. 1+00 CUT DA-1




NOTES:
1. REFER TO SURVEY NO. 22-075.
2. SEE SHEET NO. 1 FOR SURVEY NOTES.

38+25.4
38+30.0
38+35.0
38+40.0
38+45.0
38+50.0
38+55.0
38+60.0
38+65.0
38+70.0
38+75.0
38+80.0
38+85.0
38+90.0
38+95.0
39+00.0
39+05.0
39+10.0
39+15.0
39+20.0
39+25.0
39+30.0
39+35.0
39+40.0
39+45.0
39+50.0
39+55.0
39+60.0
39+65.0
39+70.0
39+75.0
39+80.0
39+85.0
39+90.0
39+95.0
40+00.0
40+05.0
40+10.0
40+15.0
40+20.0
40+25.0
40+30.0
40+35.0
40+40.0
40+45.0
40+50.0
40+55.0
40+60.0
40+65.0
40+70.0
40+75.0
40+80.0
40+85.0
40+90.0
40+95.0
41+00.0
41+05.0
41+10.0
41+15.0
41+20.0
41+25.0
41+30.0
41+35.0
41+40.0
41+45.0
41+50.0
41+55.0
41+60.0
41+65.0
41+70.0
41+75.0
41+80.0
41+85.0
41+90.0
41+95.0
42+00.0
42+05.0
42+10.0
42+15.0
42+20.0
42+25.0
42+30.0
42+35.0
42+40.0
42+45.0
42+50.0
42+55.0
42+60.0
42+65.0
42+70.0
42+75.0
42+80.0
42+85.0
42+90.0
42+95.0
43+00.0
43+05.0
43+10.0
43+15.0
43+20.0
43+25.0
43+30.0
43+35.0
43+40.0
43+45.0
43+50.0
43+55.0
43+60.0
43+65.0
43+70.0
43+75.0
43+80.0
43+85.0
43+90.0
43+95.0
44+00.0
44+05.0
44+10.0
44+15.0
44+20.0
44+25.0
44+30.0
44+35.0
44+40.0
44+45.0
44+50.0
44+55.0
44+60.0
44+65.0
44+70.0
44+75.0
44+80.0
44+85.0
44+90.0
44+95.0
45+00.0
45+05.0
45+10.0
45+15.0
45+20.0
45+25.0
45+30.0
45+35.0
45+40.0
45+45.0
45+50.0
45+55.0
45+60.0
45+65.0
45+70.0
45+75.0
45+80.0
45+85.0
45+90.0
45+95.0
46+00.0
46+05.0
46+10.0
46+15.0
46+20.0
46+25.0
46+30.0
46+35.0
46+40.0
46+45.0
46+50.0
46+55.0
46+60.0
46+65.0
46+70.0
46+75.0
46+80.0
46+85.0
46+90.0
46+95.0
47+00.0
47+05.0
47+10.0
47+15.0
47+20.0
47+25.0
47+30.0
47+35.0
47+40.0
47+45.0
47+50.0
47+55.0
47+60.0
47+65.0
47+70.0
47+75.0
47+80.0
47+85.0
47+90.0
47+95.0
48+00.0
48+05.0
48+10.0
48+15.0
48+20.0
48+25.0
48+30.0
48+35.0
48+40.0
48+45.0
48+50.0
48+55.0
48+60.0
48+65.0
48+70.0
48+75.0
48+80.0
48+85.0
48+90.0
48+95.0
49+00.0
49+05.0
49+10.0
49+15.0
49+20.0
49+25.0
49+30.0
49+35.0
49+40.0
49+45.0
49+50.0
49+55.0
49+60.0
49+65.0
49+70.0
49+75.0
49+80.0
49+85.0
49+90.0
49+95.0
50+00.0
50+05.0
50+10.0
50+15.0
50+20.0
50+25.0
50+30.0
50+35.0
50+40.0
50+45.0
50+50.0
50+55.0
50+60.0
50+65.0
50+70.0
50+75.0
50+80.0
50+85.0
50+90.0
50+95.0
51+00.0
51+05.0
51+10.0
51+15.0
51+20.0
51+25.0
51+30.0
51+35.0
51+40.0
51+45.0
51+50.0
51+55.0
51+60.0
51+65.0
51+70.0
51+75.0
51+80.0
51+85.0
51+90.0
51+95.0
52+00.0
52+05.0
52+10.0
52+15.0
52+20.0
52+25.0
52+30.0
52+35.0
52+40.0
52+45.0
52+50.0
52+55.0
52+60.0
52+65.0
52+70.0
52+75.0
52+80.0
52+85.0
52+90.0
52+95.0
53+00.0
53+05.0
53+10.0
53+15.0
53+20.0
53+25.0
53+30.0
53+35.0
53+40.0
53+45.0
53+50.0
53+55.0
53+60.0
53+65.0
53+70.0
53+75.0
53+80.0
53+85.0
53+90.0
53+95.0
54+00.0
54+05.0
54+10.0
54+15.0
54+20.0
54+25.0
54+30.0
54+35.0
54+40.0
54+45.0
54+50.0
54+55.0
54+60.0
54+65.0
54+70.0
54+75.0
54+80.0
54+85.0
54+90.0
54+95.0
55+00.0

| | |
|--|--------------------------------|
| <p>US Army Corps of Engineers Jacksonville District SAFETY ON THIS JOB DEPENDS ON YOU</p> | |
| <p>DEPARTMENT OF THE ARMY JACKSONVILLE DISTRICT, CORPS OF ENGINEERS JACKSONVILLE, FLORIDA</p> | |
| <p>Drawn by: WRM</p> | <p>Checked by: GHR</p> |
| <p>Designed by: WRM</p> | <p>Reviewed by: WRM</p> |
| <p>File Name: 22-075-63-8R-RDR_DALGN</p> | <p>Date: MAR 2022</p> |
| <p>INTRACOASTAL WATERWAY JACKSONVILLE TO MIAMI, FLORIDA DADE COUNTY HYDROGRAPHIC EXAM SURVEY FY22 10-FOOT PROJECT STA. 29+00 CUT BW-63 THRU STA. 1+00 CUT DA-1 PLAN</p> | |
| <p>Scale: AS SHOWN</p> | |
| <p>Drawing no. 2</p> | |
| <p>SHEET 02 OF 27</p> | |





 US Army Corps of Engineers
 Jacksonville District
 SAFETY ON THIS JOB
 DEPENDS ON YOU

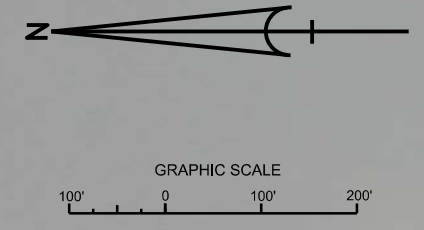
DEPARTMENT OF THE ARMY
 JACKSONVILLE DISTRICT, CORPS OF ENGINEERS
 JACKSONVILLE, FLORIDA

Call by: GHR
 Designed by: WRM
 Drawn by: WRM
 File No: W12255-000-0000
 Date: MAR 2022

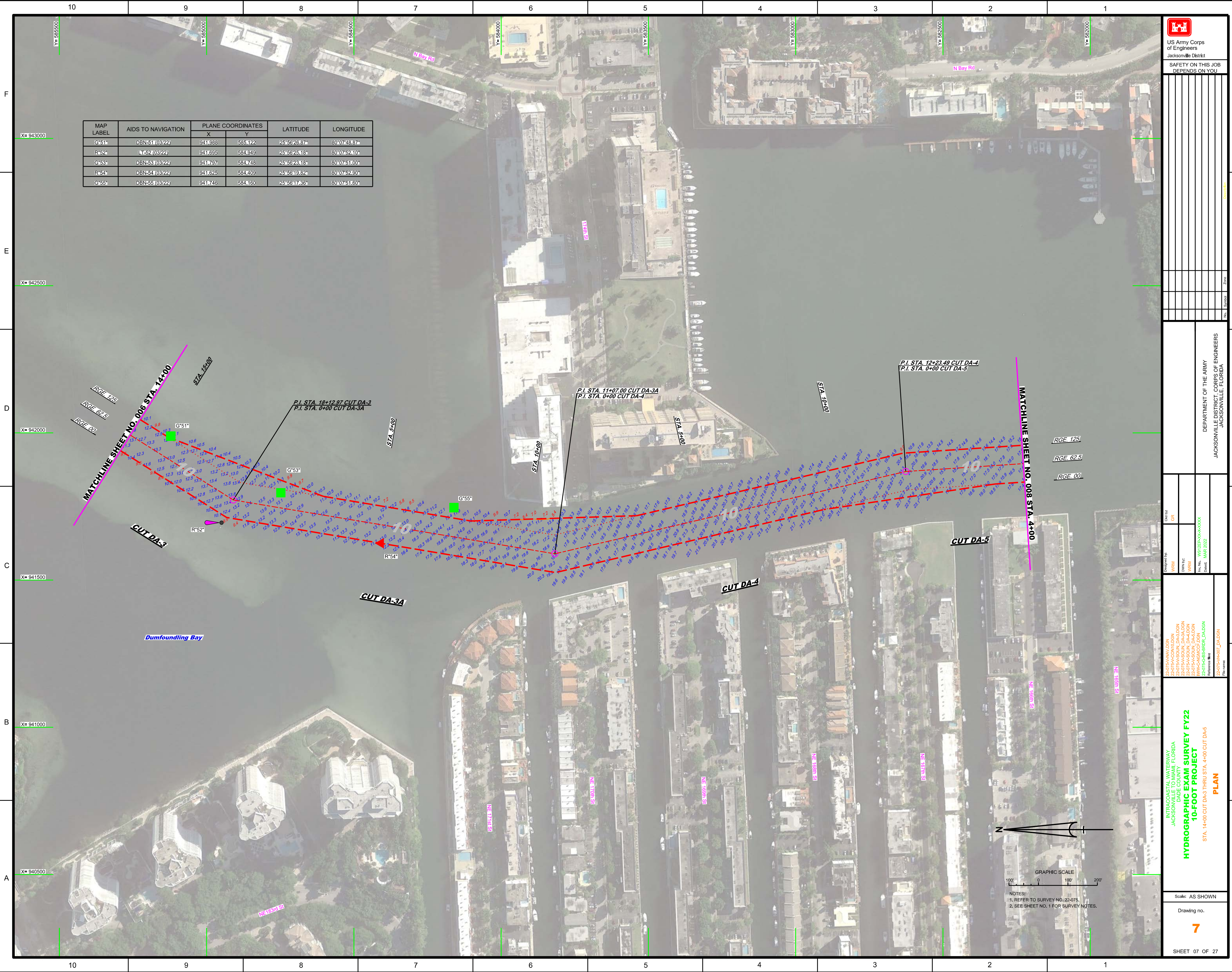
INTRACOASTAL WATERWAY
 JACKSONVILLE TO MIAMI, FLORIDA
 DADE COUNTY
HYDROGRAPHIC EXAM SURVEY FY22
10-FOOT PROJECT
 STA. 46+00 CUT DA-2 THRU STA. 14+00 CUT DA-3
PLAN

Scale: AS SHOWN
 Drawing no. **6**
 SHEET 06 OF 27


| MAP LABEL | AIDS TO NAVIGATION | PLANE COORDINATES | | LATITUDE | LONGITUDE |
|-----------|--------------------|-------------------|--------|--------------|--------------|
| | | X | Y | | |
| G°49' | 19 (03/22) | 942819 | 586407 | 25°56'39.54" | 80°07'39.68" |
| R°50' | BUOY 50 (03/22) | 942842 | 586247 | 25°56'37.97" | 80°07'42.73" |



NOTES:
 1. REFER TO SURVEY NO. 22-075.
 2. SEE SHEET NO. 1 FOR SURVEY NOTES.



| MAP LABEL | AIDS TO NAVIGATION | PLANE COORDINATES | | LATITUDE | LONGITUDE |
|-----------|--------------------|-------------------|--------|--------------|--------------|
| | | X | Y | | |
| G*51* | DBN-51 (03/22) | 941988 | 585122 | 25°56'26.87" | 80°07'48.87" |
| R*52* | LR-52 (03/22) | 941695 | 584949 | 25°56'25.18" | 80°07'52.10" |
| G*53* | DBN-53 (03/22) | 941797 | 584748 | 25°56'28.16" | 80°07'51.00" |
| R*54* | DBN-54 (03/22) | 941625 | 584409 | 25°56'49.82" | 80°07'52.50" |
| G*55* | DBN-55 (03/22) | 941746 | 584160 | 25°56'47.36" | 80°07'51.60" |



US Army Corps of Engineers
Jacksonville District

SAFETY ON THIS JOB
DEPENDS ON YOU

DEPARTMENT OF THE ARMY
JACKSONVILLE DISTRICT, CORPS OF ENGINEERS
JACKSONVILLE, FLORIDA

Checked By: GRL
Designed By: WRM
Drawn By: WRM
File No: W02255-00-00-004
Date: MAR 2022

INTRACOASTAL WATERWAY
JACKSONVILLE TO MIAMI, FLORIDA
DADE COUNTY
HYDROGRAPHIC EXAM SURVEY FY22
10-FOOT PROJECT
STA. 14+00 CUT DA-3 THRU STA. 4+00 CUT DA-5
PLAN

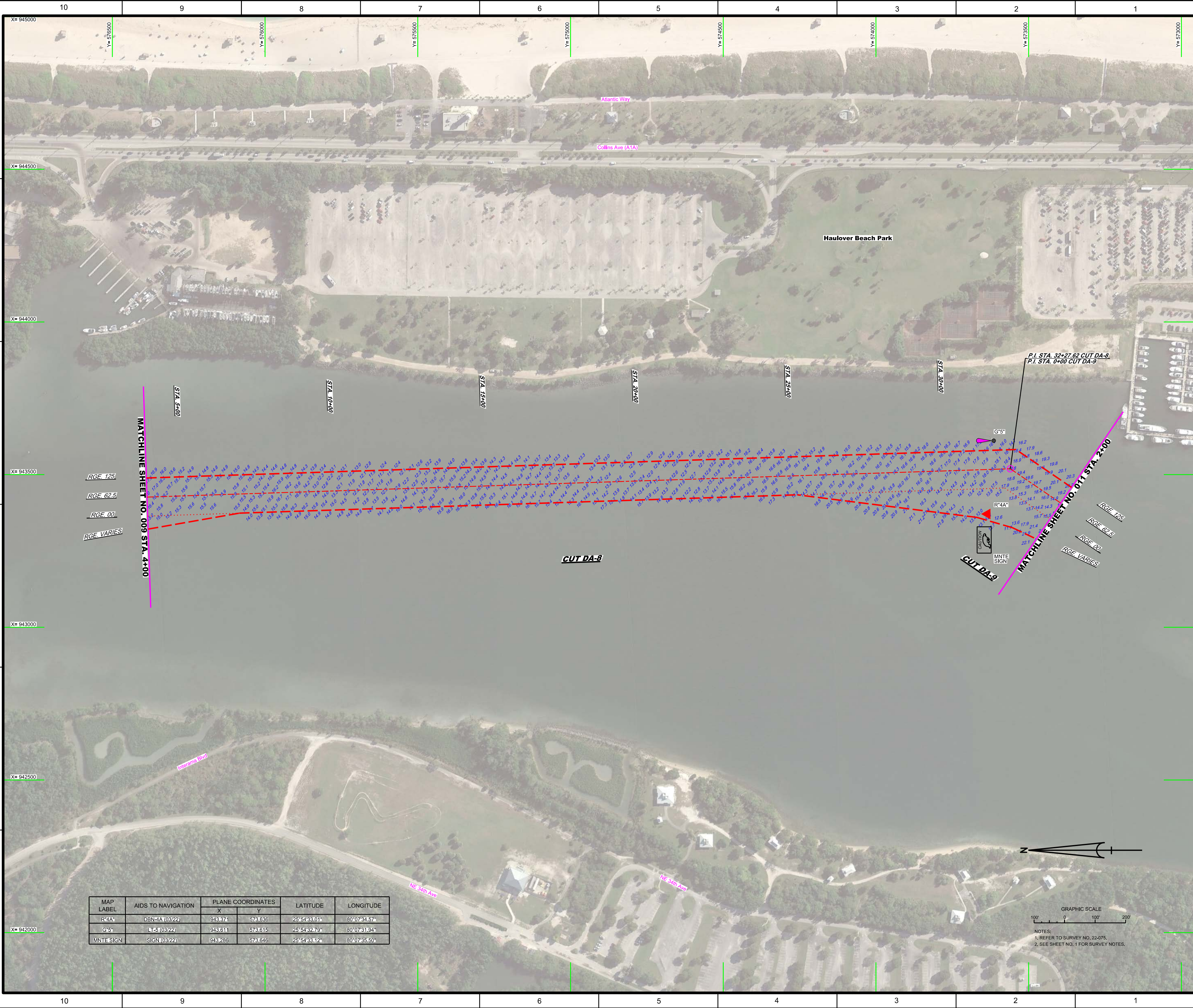
Scale: AS SHOWN


Drawing no.
7

SHEET 07 OF 27



NOTES:
1. REFER TO SURVEY NO. 22-075.
2. SEE SHEET NO. 1 FOR SURVEY NOTES.





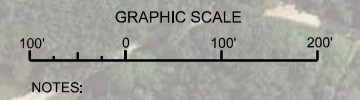
 US Army Corps of Engineers
 Jacksonville District
 SAFETY ON THIS JOB
 DEPENDS ON YOU

DEPARTMENT OF THE ARMY
 JACKSONVILLE DISTRICT, CORPS OF ENGINEERS
 JACKSONVILLE, FLORIDA

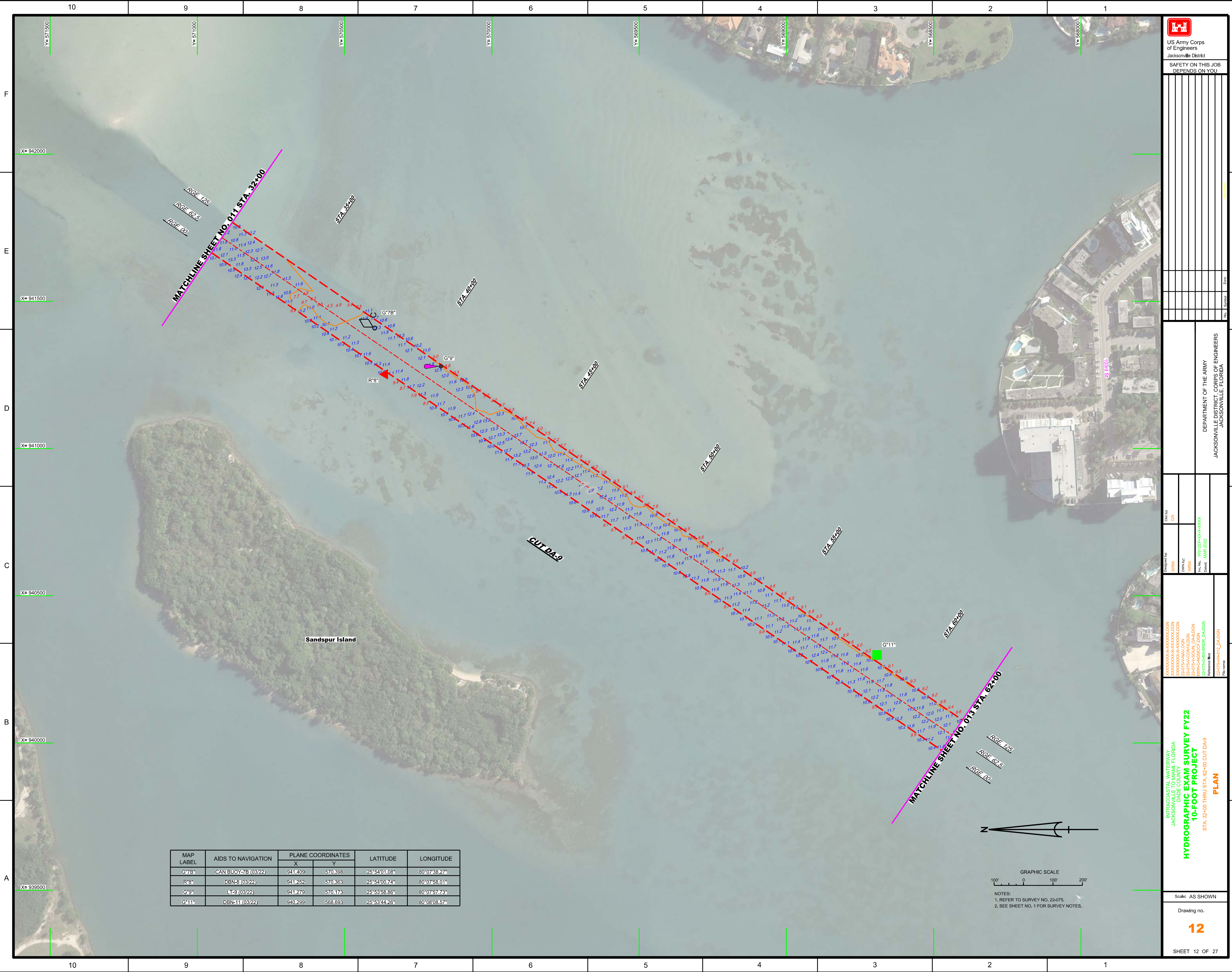
Designed by: WRM
 Drawn by: WRM
 Date: MAR 2022
 File Name: W20220304-DA-8.DGN
 Reference File: W20220304-DA-8.DGN

INTRACOASTAL WATERWAY
 JACKSONVILLE TO MIAMI, FLORIDA
 DADE COUNTY
HYDROGRAPHIC EXAM SURVEY FY22
10-FOOT PROJECT
 STA. 4+00 CUT DA-8 THRU STA. 2+00 CUT DA-9
PLAN

| MAP LABEL | AIDS TO NAVIGATION | PLANE COORDINATES | | LATITUDE | LONGITUDE |
|-----------|--------------------|-------------------|--------|--------------|--------------|
| | | X | Y | | |
| R4A | DBN-4A (03/22) | 943874 | 573636 | 25°54'33.01" | 80°07'34.57" |
| G5 | L75 (03/22) | 943611 | 573615 | 25°54'32.79" | 80°07'31.94" |
| MNTSIGN | SIGN(03/22) | 943286 | 573646 | 25°54'33.12" | 80°07'35.50" |



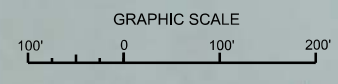
NOTES:
 1. REFER TO SURVEY NO. 22-075.
 2. SEE SHEET NO. 1 FOR SURVEY NOTES.




MATCHLINE SHEET NO. 011 STA. 32+00

MATCHLINE SHEET NO. 013 STA. 62+00

| MAP LABEL | AIDS TO NAVIGATION | PLANE COORDINATES | | LATITUDE | LONGITUDE |
|-----------|---------------------|-------------------|--------|--------------|--------------|
| | | X | Y | | |
| G*7B | CAN BUOY-7B (03/22) | 941409 | 570398 | 25°54'01.08" | 80°07'38.27" |
| R*8 | DBN-8 (03/22) | 941252 | 570363 | 25°54'00.74" | 80°07'58.01" |
| G*9 | LT-9 (03/22) | 941279 | 570173 | 25°53'58.86" | 80°07'57.73" |
| G*11 | DBN-11 (03/22) | 940299 | 568693 | 25°53'44.26" | 80°08'08.57" |



NOTES:
 1. REFER TO SURVEY NO. 22-075.
 2. SEE SHEET NO. 1 FOR SURVEY NOTES.



US Army Corps of Engineers
 Jacksonville District
 SAFETY ON THIS JOB
 DEPENDS ON YOU

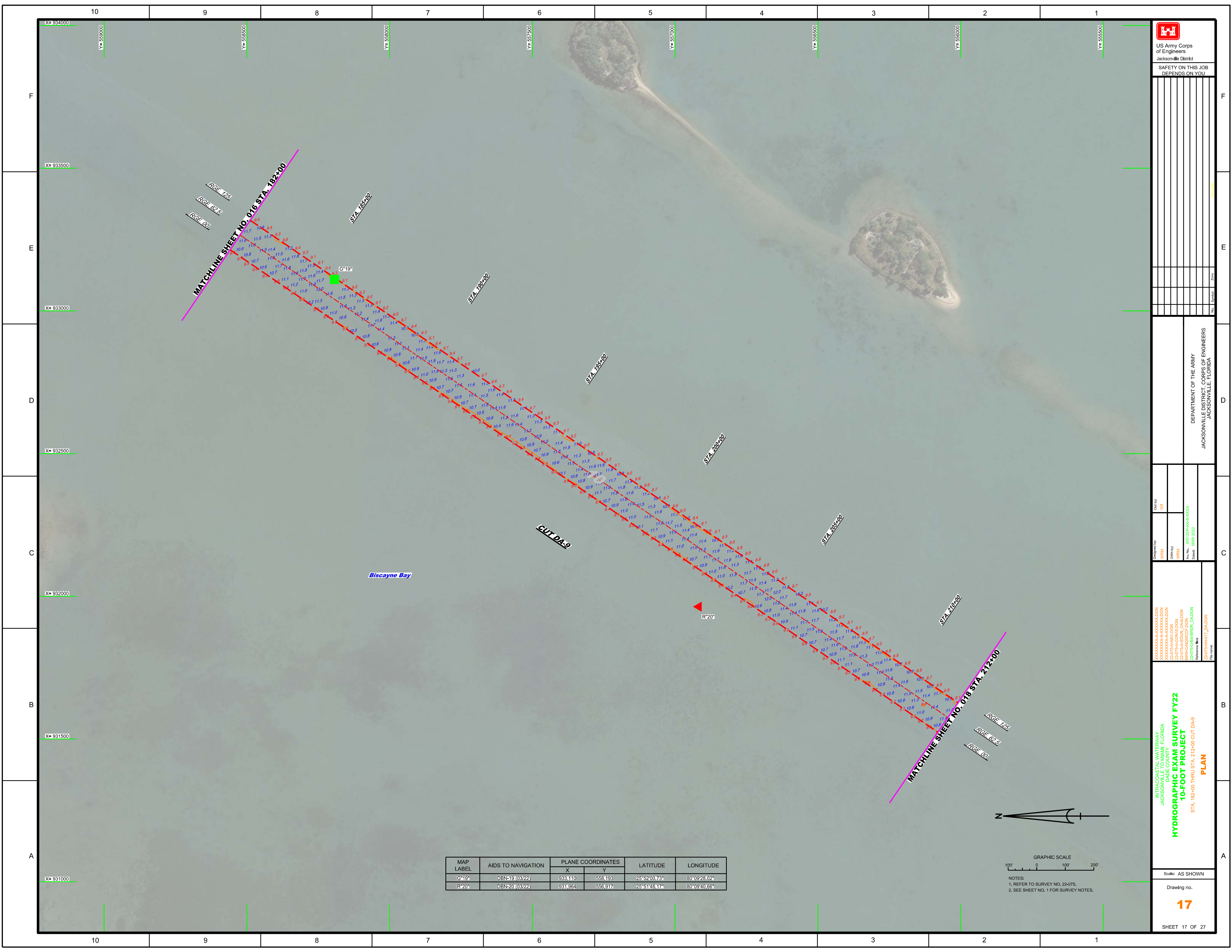
Designed by: WRM
 Drawn by: WRM
 File No.: W81255-000-0000
 Date: MAR 2022


Checked by: GR
 Date: MAR 2022

INTRACOASTAL WATERWAY
 JACKSONVILLE TO MIAMI, FLORIDA
 DADE COUNTY
10-FOOT PROJECT
 STA. 32+00 THRU STA. 62+00 CUT DA-9
PLAN

DEPARTMENT OF THE ARMY
 JACKSONVILLE DISTRICT, CORPS OF ENGINEERS
 JACKSONVILLE, FLORIDA

Scale: AS SHOWN
 Drawing no.
12
 SHEET 12 OF 27




 US Army Corps of Engineers
 Jacksonville District
 SAFETY ON THIS JOB
 DEPENDS ON YOU

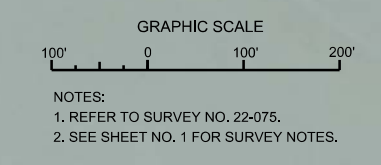
DEPARTMENT OF THE ARMY
 JACKSONVILLE DISTRICT, CORPS OF ENGINEERS
 JACKSONVILLE, FLORIDA

Call by: GRL
 Designed by: WRM
 Drawn by: WRM
 File No: W81255-000-0000
 Date: MAR 2022

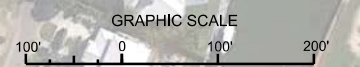
INTRACOASTAL WATERWAY
 JACKSONVILLE TO MIAMI, FLORIDA
 DADE COUNTY
HYDROGRAPHIC EXAM SURVEY FY22
10-FOOT PROJECT
 STA. 182+00 THRU STA. 212+00 CUT DA-9
PLAN

Scale: AS SHOWN
 Drawing no.
17
 SHEET 17 OF 27

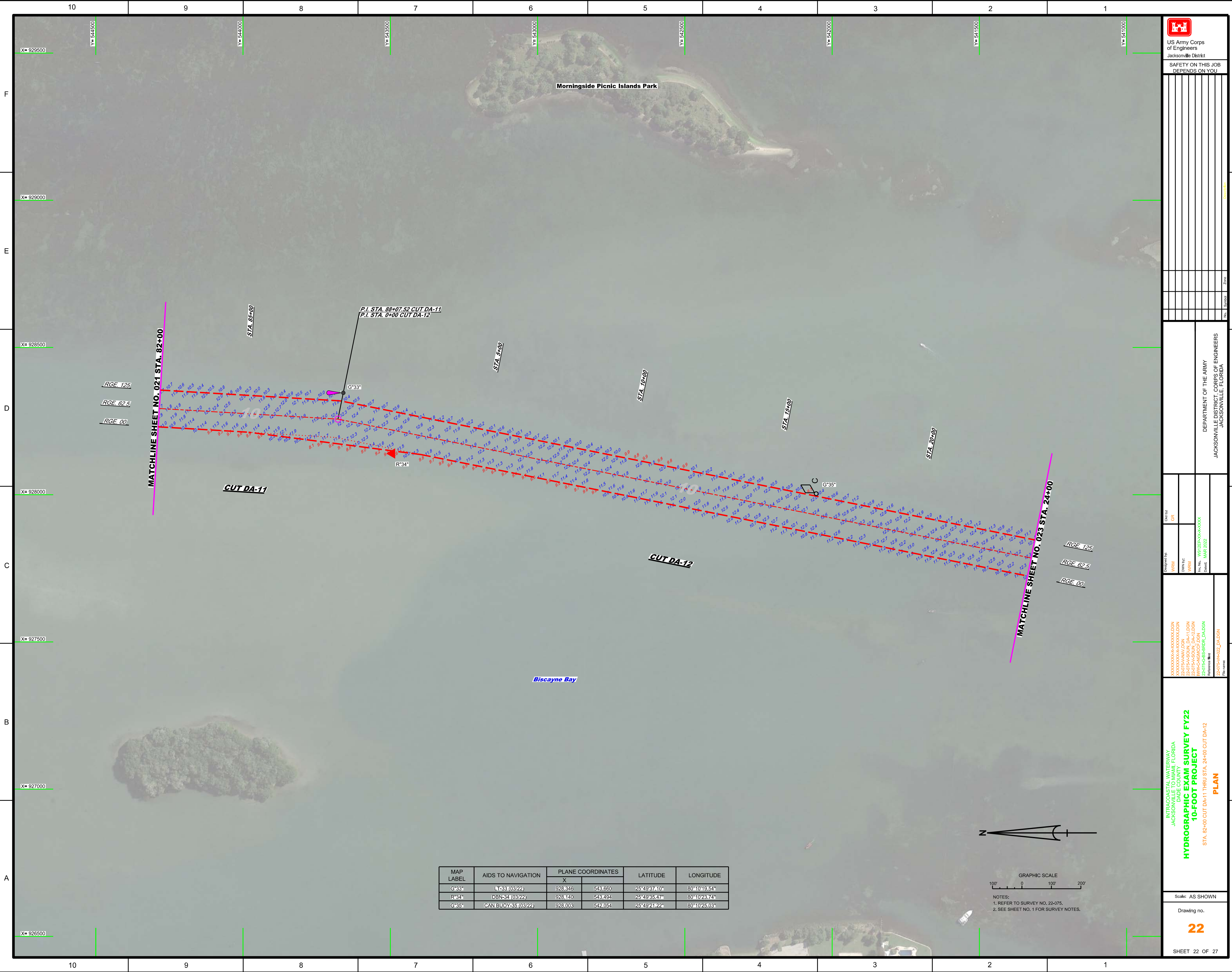
| MAP LABEL | AIDS TO NAVIGATION | PLANE COORDINATES | | LATITUDE | LONGITUDE |
|-----------|--------------------|-------------------|--------|--------------|--------------|
| | | X | Y | | |
| G19* | DBN-19 (03/22) | 933110 | 558193 | 25°52'00.73" | 80°09'28.02" |
| R20* | DBN-20 (03/22) | 931964 | 556917 | 25°51'48.17" | 80°09'40.66" |



| MAP LABEL | AIDS TO NAVIGATION | PLANE COORDINATES | | LATITUDE | LONGITUDE |
|-----------|--------------------|-------------------|---------|--------------|--------------|
| | | X | Y | | |
| R*24" | DBN24 (03/22) | 929,524 | 553,284 | 25°51'12.34" | 80°10'07.61" |
| G*25" | DBN25 (03/22) | 929,337 | 552,319 | 25°51'08.74" | 80°10'09.69" |
| R*26" | LT-26 (03/22) | 928,744 | 552,462 | 25°51'04.25" | 80°10'16.24" |
| MNTE SIGN | SIGN (03/22) | 928,540 | 550,913 | 25°50'48.92" | 80°10'18.55" |
| INFO SIGN | SIGN (03/22) | 928,628 | 551,609 | 25°50'55.81" | 80°10'17.54" |




NOTES:
1. REFER TO SURVEY NO. 22-075.
2. SEE SHEET NO. 1 FOR SURVEY NOTES.



F
E
D
C
B
A

F
E
D
C
B
A

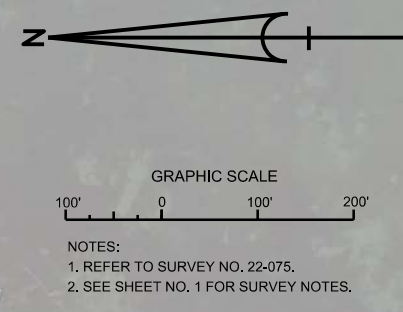

 US Army Corps of Engineers
 Jacksonville District
 SAFETY ON THIS JOB DEPENDS ON YOU

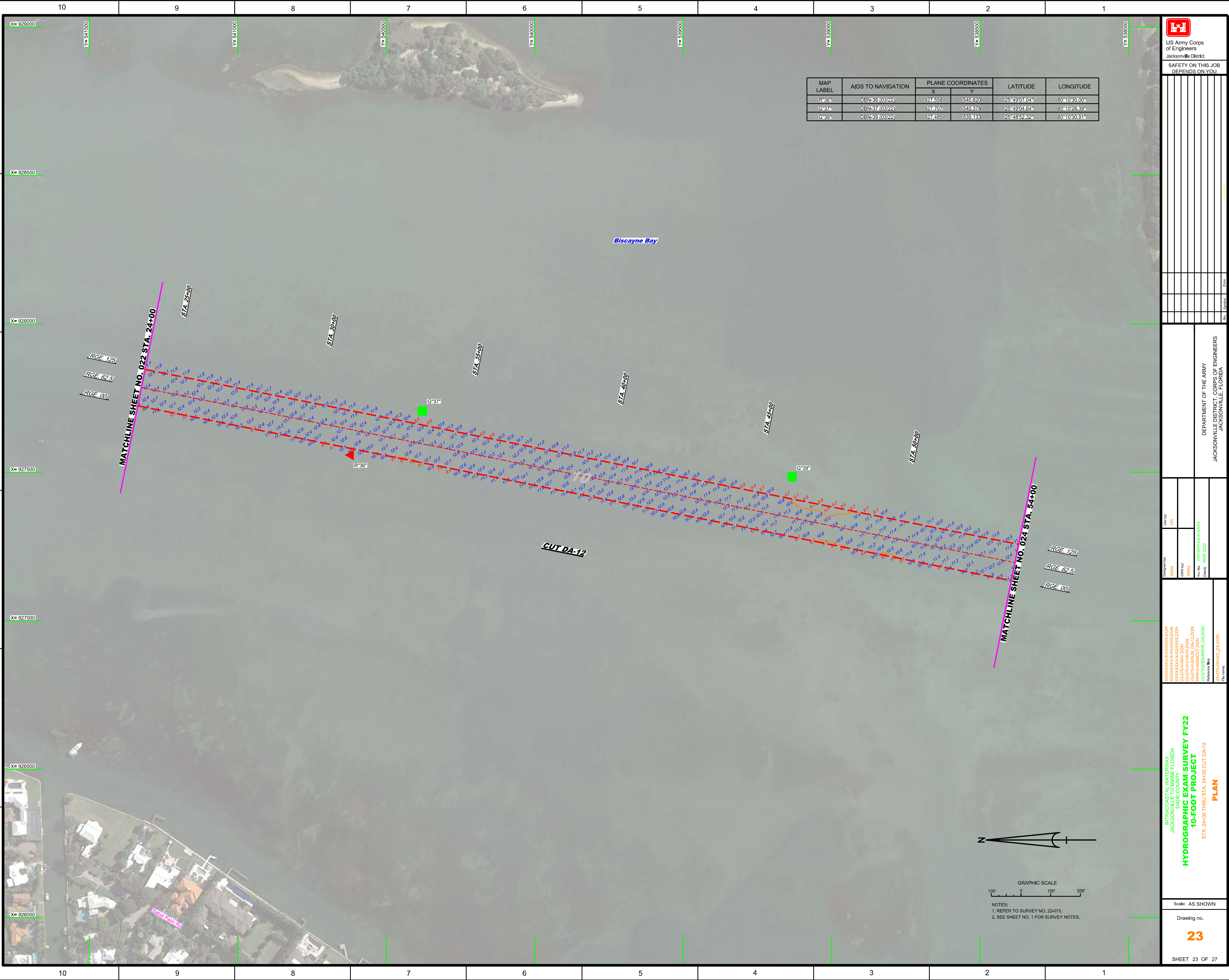
DEPARTMENT OF THE ARMY
 JACKSONVILLE DISTRICT, CORPS OF ENGINEERS
 JACKSONVILLE, FLORIDA

Designated by: **WRM**
 Drawn by: **WRM**
 Date: **MAR 2022**
 File name: **22-075-00-00000000.DGN**
 Project: **22-075-00-00000000.DGN**
 Drawing: **22-075-00-00000000.DGN**
 Reference: **22-075-00-00000000.DGN**


INTRACOASTAL WATERWAY
 JACKSONVILLE TO MIAMI, FLORIDA
 DADE COUNTY
HYDROGRAPHIC EXAM SURVEY FY22
10-FOOT PROJECT
 STA. 82+00 CUT DA-11 THRU STA. 24+00 CUT DA-12
PLAN
 Scale: AS SHOWN
 Drawing no. **22**
 SHEET 22 OF 27

| MAP LABEL | AIDS TO NAVIGATION | PLANE COORDINATES | | LATITUDE | LONGITUDE |
|-----------|--------------------|-------------------|---------|--------------|--------------|
| | | X | Y | | |
| G33* | L2331(03/22) | 928,845 | 543,660 | 25°49'37.10" | 80°10'19.54" |
| R34* | DBN-34(03/22) | 928,140 | 543,494 | 25°49'35.47" | 80°10'23.74" |
| G35* | CAN BUOY-35(03/22) | 928,003 | 542,054 | 25°49'23.22" | 80°10'25.03" |





| MAP LABEL | AIDS TO NAVIGATION | PLANE COORDINATES | | LATITUDE | LONGITUDE |
|-----------|--------------------|-------------------|---------|--------------|--------------|
| | | X | Y | | |
| R-36 | DBN-36 (03/22) | 927,558 | 540,620 | 25 49 07.04" | 80 10 30.00" |
| G-37 | DBN-37 (03/22) | 927,107 | 540,378 | 25 49 04.64" | 80 10 28.39" |
| G-39 | DBN-39 (03/22) | 927,485 | 539,133 | 25 48 52.32" | 80 10 30.91" |



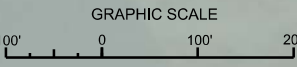
 US Army Corps of Engineers
 Jacksonville District
 SAFETY ON THIS JOB DEPENDS ON YOU

DEPARTMENT OF THE ARMY
 JACKSONVILLE DISTRICT, CORPS OF ENGINEERS
 JACKSONVILLE, FLORIDA

Designated by: WRM
 Drawn by: WRM
 Checked by: WRM
 Date: MAR 2022

INTRACOASTAL WATERWAY
 JACKSONVILLE TO MIAMI, FLORIDA
 DADE COUNTY
HYDROGRAPHIC EXAM SURVEY FY22
10-FOOT PROJECT
 STA. 24+00 THRU STA. 54+00 CUT DA-12
PLAN

Scale: AS SHOWN
 Drawing no.
23
 SHEET 23 OF 27



NOTES:
 1. REFER TO SURVEY NO. 22-075.
 2. SEE SHEET NO. 1 FOR SURVEY NOTES.

